



East Hall at night



Detail of Lobby at West Hall



West Hall

“East, Roberts, and West Halls represent the finest thinking in the marriage of student development, student comfort, sustainability and aesthetics.”

**Jon Eldridge, Dean of Students
Lewis & Clark College**

PROJECT DETAILS

Owner
Lewis & Clark College
Michael Sestric, Campus Planner
Portland, Oregon

Project Type
New Construction

Project Figures
Square Footage: 75,000 sq. ft.
Total Beds: 170

Awards
IIDA, Merit Award, Institutional

LEED™ Certification
LEED v2 Silver, Roberts Hall

Design Team
SERA Architects, Inc.
Don Eggleston, AIA
Principal-in-Charge
John Echlin, AIA, LEED™ AP
Project Designer
Sam Rodriguez, AIA, LEED™ AP
Project Manager
John Smith, AIA, LEED™ AP
Job Captain
Lisa Zangerle, IIDA, LEED™ AP
Interior Designer

Consultants
Walker/Macy Landscape Architects
KPFF Structural Engineers
CBG Mechanical & Electrical
Engineers
Harper Houf Righellis Civil Engineers
NIS Telecom

Contractor
DPR General Contractor

Completion Date
2003

A Sense of Community

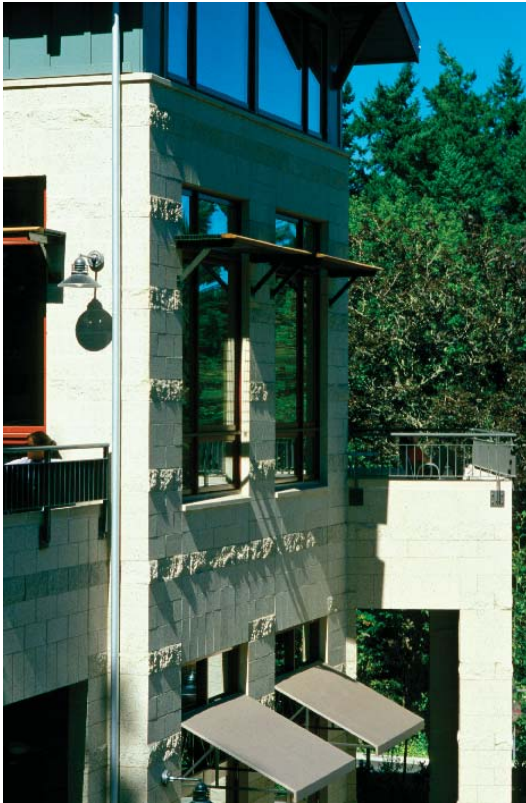
East, Roberts and West Halls were designed and built for Lewis & Clark College to attract upper class students to campus residence and enrich their educational experience. Designed as a residential village the new halls provide a highly desired sense of community and privacy in a forested setting. Student activities situated around a village plaza establish a social focus. Private lounges overlook the plaza and activities below.

Environmental Goals Established

The residence halls were designed to blend with the natural setting. A workshop process involving students, faculty and staff established the programmatic and environmental goals to be achieved on a site constrained by sloping typography and existing trees. The building masses were broken up in a relaxed, informal manner to provide a more residential scale. A campus-meeting area, with the size and feel of an Italian hilltown piazza, provides a focal point along a primary pedestrian route up the hill. Alternative transportation is encouraged. Existing parking has been reduced with a provision of bike parking and a vanpool to serve the residents.

The buildings have been sited using passive-solar strategies to reduce energy needs. Interior materials and finishes were selected based on their warmth, durability, and the goal of achieving a LEED silver rating. Elements such as wood trusses and stained concrete floors were left exposed to serve as both structure and finish. The student apartments offer full kitchens, large operable windows, private bathrooms and shared living area.

The buildings range in size from 21,000 to 27,000 square feet and can each house 56–60 students in two and four bedroom apartments.



Window Detail, Roberts Hall

Maggie's Cafe, Roberts Hall

Low Energy High Performance

Roberts Hall performs 24% better than Oregon Energy Code. 100% of the building's electricity is provided from renewable sources through a Green Tag wind power purchasing program for the entire campus. A passive design strategy allows the building to be solar assisted. The use of operable windows negates the need for air-conditioning within the residence hall and an energy efficient baseboard hydronic system is used for space heating. Energy-efficient lighting, appliances, and water-saving fixtures add to the building's performance.

Eliminating Waste and Pollution

The existing, on-site single family houses had to be removed to accommodate the new residence halls. The houses were de-constructed for recycling purposes rather than demolished. A construction waste management plan was in place resulting in 96.5% of the construction debris was diverted from a landfill. In addition, the site has been carefully designed to allow for storm water infiltration of the soil from both roof and paved surfaces thus avoiding a pollution surcharge to nearby Tryon Creek.

Low Embodied Energy

To the greatest extent possible, local and regional materials were used, which include CMU block, concrete, steel, and certified wood. 74% of the materials specified were manufactured locally, and 66% were harvested locally.

Health and Happiness

One of the main priorities of the project is the inclusion of measures to assure healthy indoor environmental quality. In addition to natural ventilation provided by operable windows, natural daylight and views from all the main occupied spaces provide an indoor environment that is connected to the outdoors.



Roberts Hall shown on the right.

ROBERTS HALL LEED v2 SILVER CERTIFICATION HIGHLIGHTS

- Reduced Site Disturbance
- Natural Daylighting and Ventilation
- Optimized Energy Performance
- 100% Renewable Power
- Storm water management
- Water Efficiency-landscaping
- High Recycled and Rapid Renewable Material Content
- Local/Regional Materials Specified
- 100% Use of Low VOC Paints
- Construction Waste Management